

# Dual Sensor Camera

## DC-TH2011

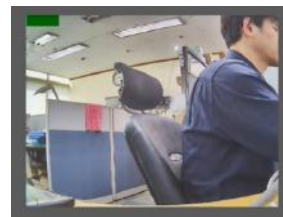
- Dual Sensor (Thermal+Sensor) IP Camera
- 3Mode Display Support (Visual / Thermal / Overlay)
- Onvif-compliant
- Up to 10 Points of Temperature Probing
- Visual / Thermal Overlay Mode
- Alarm Activation by Temperature Threshold



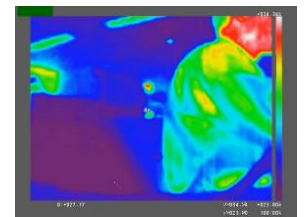
### SPECIFICATIONS

Feature		
Thermal Image	IR Sensor Frame Rate	< 9 Hz
	IR Sensor Resolution	80 (h) x 60 (v) Pixel
	Spectral Range	LWIR, 8 to 14µm
	Field of View (FOV)	51° HFOV, 63.5° Diagonal (f/1.1 Silicon Double)
	Temperature Sensitivity	< 50 mK (0.05°C)
	Temperature Range	0°C ~ 120°C
Visible Image	CMOS Sensor	1/3.2 inch Sony CMOS Progressive Scan
	Effective Pixels	1280 (H) x 960 (V) : 1.23M
	Frame Rate	30fps
	Resized Resolution	720 (h) x 540 (v) Pixel
	Multi User Access	10 (RTSP Streaming)
Others	Alarm Out	1 port (Dry contact, relay out)
	Operating Temperature	-10°C ~ +60°C (14°F ~ +140°F)
	Power	PoE(802.3.af), DC12V
	Power Consumption	3.9W
	Dimension (WxHxD)	80x113x33.1(mm), 80x113x41mm Foot(Incl Bracket)
Weight	320g	

### Visual/Thermal Overlay Mode



Visual Image  
Stream#1 @ 1.2MP

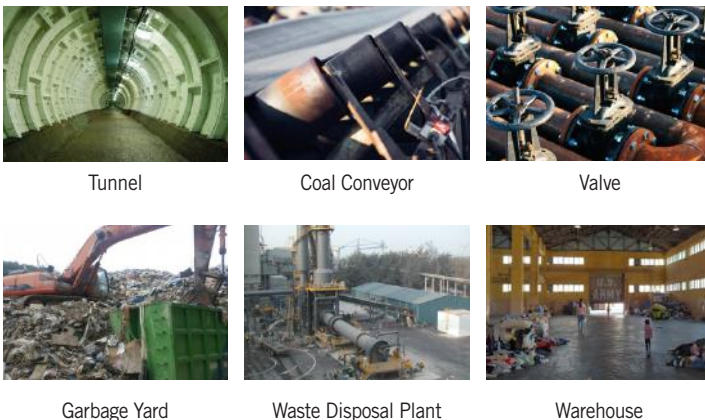


Thermal Image (Color)  
Stream#2 @ 80 x 60



Overlaid Image (Color)  
Stream#3 @ 720 x 540

### Case Study



### Multiple Points of Temperature Measurement

Up to 10 Points of Simultaneous Temperature Probing

